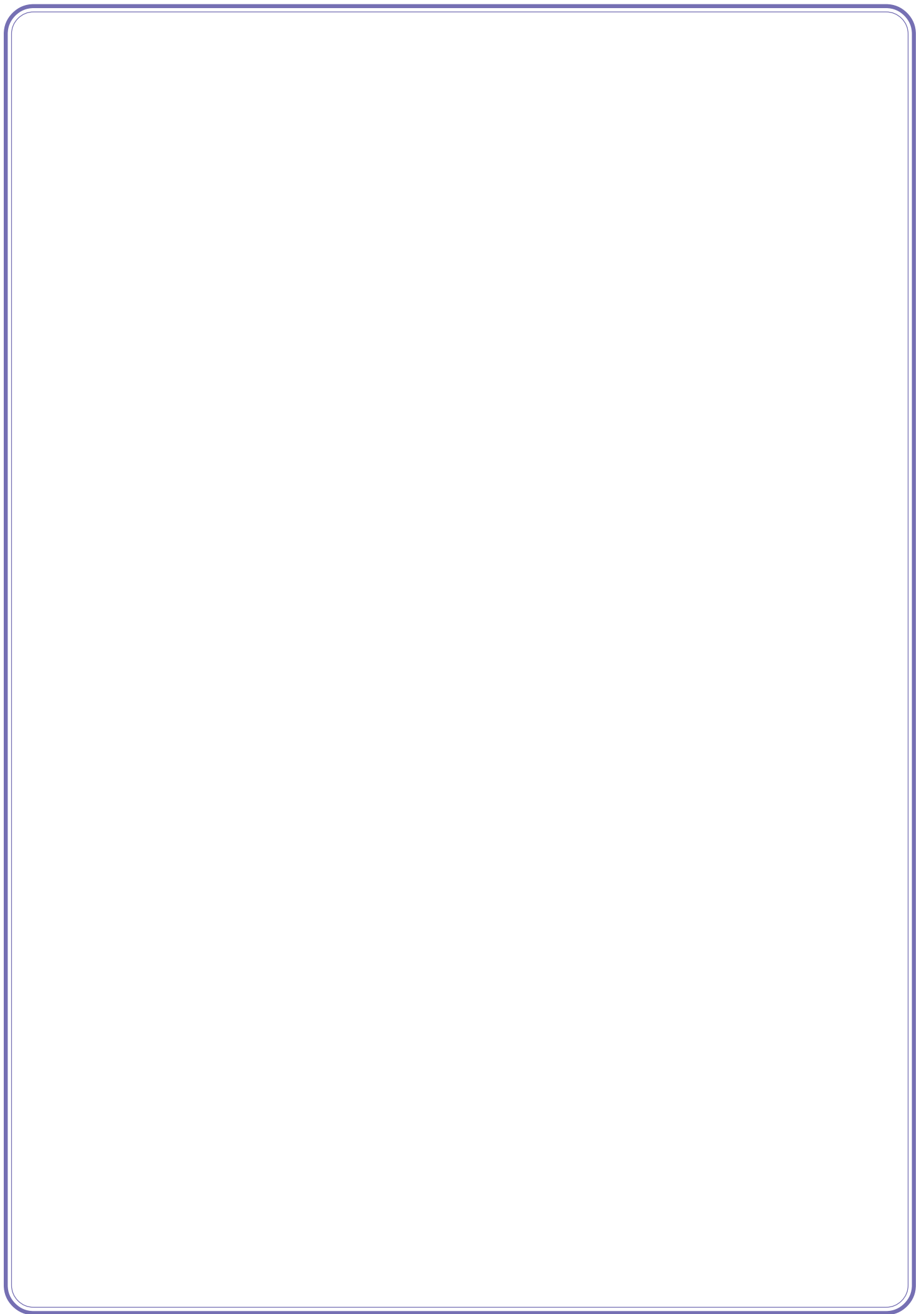


St. Paul's Beckenham

PARI SH PROFILE

"Sharing the love of God"



Contents

1. Introduction page 1
2. The context for ministry page 3
 - Fellowship
 - Local community mission
 - Out of parish mission
3. The church and vicarage page 6
4. The new vicar page 7

Appendices

1. The leadership team page 9
2. Church Committees and Groups page 10
3. The Parish page 11
4. Local information page 13
5. Statistics page 14
6. Contact details and map page 15

Enclosures

- Financial Statements
- The history of St Paul's (copies available on request)

Introduction

Our mission statement is "sharing the love of God". At St Paul's we seek to make this a reality both in our lives as individuals and as members of the whole body of Christ. We recognise that we have much more to do to get to know God better, to be who God wants us to be and to do what God wants us to do. We continue to seek God's guidance, so that we might reach out in action, prayer and love, make Jesus known and warmly welcome newcomers to our fellowship.

Our base of regular worshippers has grown over the last couple of years and now spans most age groups with a mix of different socio-economic groups and ethnic backgrounds. The reasons for this growth we are told reflect our welcome and fellowship, our style of worship and our preaching which is strongly Biblical and generally evangelical in emphasis with practical applications.

We are blessed with many gifts among our church members, including ministerial and pastoral gifts but also organisational gifts,

which particularly over this last year have enabled St Paul's to develop and to grow. A large number of the congregation are involved in day to day Church life and activities



which also contribute to its close community feel. For example, we have four Readers and a retired vicar; three pastoral assistants; a well attended PCC along with its eight sub-committees; eight Home Groups each averaging ten members; a regular Alpha Group which feeds into the Home groups, and a roster of over 50 who regularly read or lead prayers in the services. In addition we have various community activities in our church and church hall and have links to our local care home and school. We also support a different mission each month, giving away

10% of our general income to these causes and we maintain many links with our mission partners in the UK and abroad.

We have much to be thankful for but acknowledge that there is much more to be done in terms of our individual knowledge of God and His plans for us as a Church. The Ministry Leadership Team presentation at the Annual Meeting in April 2009 detailed the three priority areas for St Paul's over this last year:

1. To build on our strong fellowship
2. To take God's message into our local community
3. To continue our mission support outside our parish and encourage involvement with our mission partners

As a congregation we have spent some time reflecting and challenging ourselves to understand fully what it means to be part of St Paul's and to understand God's plan for each of us, individually and as a community.

This has involved taking stock of all the current activities as well as prayerful consideration of new ideas and opportunities. Over the last 12 months, we have made some progress in these areas but consider that this exciting stage of God's journey is just beginning.

We pray that as we look towards the appointment of a new vicar, God will provide the right person to lead us all in growing closer to God and in guiding us to fulfil His plan.



The context for ministry

We have a well established Ministry Leadership Team (MLT), with nine members (see Appendix 1), that has been well supported over this last year by a number of clergy. We have excellent clerical support from a part-time Administrator. The MLT meets once a month to consider the spiritual and pastoral care of the Church.

As set out in the Introduction, we have all been taking stock of what we do as a Church over the last year by looking at three areas:

- Our fellowship,
- Taking God's message to our local community,
- Reviewing our mission support and involvement.

1. Our fellowship

One of the strengths of St Paul's is its fellowship. This has been built up over the years and finds expression in a variety of ways:

We have three regular services:

- 8.00 am BCP Holy Communion Service: This has a small, but faithful congregation.
- 10.30 am Service: This is the main service of the day with 100-120 adults and 20-30 children in attendance. The worship format alternates between Common Worship Holy Communion and a non-Eucharistic Service of the Word. Several times a year we also have All-Age Worship involving everyone and following a variety of formats.
- 6.30 pm service: This is more informal and sometimes experimental or reflective, alternating with Common Worship Holy Communion.



Music is lead by a team of three organists and three pianists. We have a choir of about 20 who sing at Festival services and a small number of additional talented musicians and soloists who also take part in some services. Over the years a variety of worship elements and formats have been explored and developments have taken place depending on the gifts and age range of the congregation.

We are fortunate to have many committed children and youth leaders, enabling a Sunday morning crèche of between 5-10 children, and two Sunday school groups totalling around 20 young people, one for ages 4-10 and one for 10+. They all attend their own Sunday groups during the service but share what they have been doing in their groups when they return for the last part of the service with the adults.

There is also a regular prayer group who meet on a Friday evening, a team who exercise a prayer ministry during communion at the morning services and who manage a "Prayer Cordon" - a cascade system of alerting people to pray when a particular need arises. In addition to the regular work of the ministerial and pastoral team, there is a great deal of informal pastoral care that takes place through the activities of the Welcome Team and from the friendships that develop over tea and coffee after the morning service.

There is home visiting of the sick including Holy Communion where requested, marriage preparation courses and baptism preparation. For the ongoing spiritual development of the congregation outside of worship there are also our co-ordinated Home Group studies, Bible reading notes, a library and bookstall in church.

Our strength of fellowship is built on common spiritual needs as well as the close friendships that have come through the many church activities. These activities include:



- Regular Church groups such as Wednesday Fellowship; informal lunches at people's houses for Mums; a Men's Group (See Appendix 2).



- Occasional events during the year organised by the Social, Growth and Nurture or Youth committees such as Children's Christmas party; summer Family Service with picnic; Harvest lunch; Auction of Promises; day trip to Carrotty Wood; parent BBQs; Ladies Supper, Golf Day; Newcomers tea, 80s and 90s tea party, Lake district holiday.
- A biennial Church Weekend at Ashburnham Place, Sussex, which has been attended by over 100 of the congregation. Last year we also started a local church "Away Day" in the interim year with a similar number of attendees.

2. Local community mission

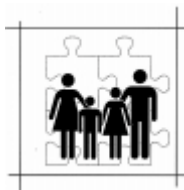
Currently, we run a regular Alpha course, two Worsley Bridge School services per term, a monthly service in Benedict House care home and Christmas singing at nursing homes and around the parish. We communicate with our whole parish via a quarterly newsletter called "Forward". There are also various groups who use the church halls including a Pre-school; an Exercise Group; a Womens Fellowship; Townswomens Guild; Baby & Toddler group and a Bridge Club. We also let the halls for parties and residents' meetings and let the church for concerts. We arrange occasional social events such as music concerts and quiz night with fish & chip supper which encourage many to get to know St Paul's.

However, in a Parish of 5,000, it is estimated that the vast majority consider themselves to be Christians but do not attend any Church (see appendix 5). A number of ideas to increase our involvement with the local community were collected at this year's "Away Day". These ideas include: restarting the Holiday Clubs; using the community flat in the local housing estate for events; setting up a regular Outreach lunch club or bereavement club; and opening up the church for other services and the church hall for a lunch club or tea and coffee on a regular basis.

3. Out of parish mission

We have for many years had a focus on supporting a number of mission partners and raising awareness of the different situations faced by Christians living elsewhere. We do this through:

- Our "Mission of the Month", whereby the attention of the congregation is focused on a different mission agency or cause each month and 8% of the general unspecified income is donated to that cause; a further 2% is held in reserve to respond to emergency appeals.



- Our association with the Church Mission Society and other agencies by means of a succession of Link Mission Partners who have been based in various countries. These have kept our congregation informed by their Link letters and visits to St Paul's, raising awareness of the nature of their work and their situation. Currently we have active links with mission partners in Tanzania, Southern Russia and Thailand.
- Members of the congregation who have served overseas themselves.
- Links with current African church leaders who were hosted by St Paul's during a period of study in the UK from 1974 to 2001. We still keep in touch with them and are reminded to remember them in prayer through the weekly Notice sheet. They also take the opportunity to visit St Paul's when their work brings them to the UK.

Overall

This is an exciting time at St Paul's, and one in which we all feel that God has great plans for us. We have many committed individuals and gifts within our congregation and look to our new vicar to help discern God's plan and lead us in doing His work within our Parish, our local community and the world around us.

The church and vicarage

The Church



The Parish Church of St Paul, Beckenham was established as a place of worship in 1863, with the present building consecrated in 1872. The building has been well cared for in recent decades with a new roof, new flooring, and internal decoration. The buildings are Grade 2 listed.

Church Halls

The church halls were added in the 1950s and are an integral part of the premises. The halls have recently been re-developed internally to

provide accommodation that is more flexible and more suitable to our needs and comprise two large halls with sliding dividing doors, a small modern kitchen and four toilets, including one for the disabled.

The halls are extensively used by the local community, as they are the only such facilities available in the community.



Vicarage and other buildings

The Vicarage is adjacent to the church. It has four bedrooms and bathroom upstairs, a kitchen and utility room, dining room, sitting room and study downstairs, and also a cloakroom with shower. The garden is of manageable size.

We also own a maisonette which is currently let to a family in the congregation.



The new vicar

*Then I heard the voice of the Lord saying, "Whom shall I send?
And who will go for us?" And I said, "Here am I. Send me!" Isaiah 5:8*

The person we are looking for:

- is a prayerful Leader and Pastor, whose preaching is Biblical, evangelical and has sound application in the real world, who will inform the mind and challenge the heart.
- someone who is able to reach and encourage both those who have travelled far on the spiritual road and those who are just beginning.
- has gifts, strengths and weaknesses, who will complement and work with our supportive leadership team to enable us all to grow and to serve God in the Parish and beyond.
- will lead by example in commitment to prayer and integrity of life, who has a heart for the people of God and the work to which God has called them.

In return we can offer:

- A welcoming fellowship with diverse gifts that is open to change and that is ready to move forward as we discover God's purposes.
- A supportive and gifted Leadership Team and Parochial Church Council.
- A secure financial position with monies available for projects such as a part time Youth Worker.

Looking to the future:

- We want to encourage and enable every member of our Church to develop their full spiritual potential, to recognise and use their gifts in the service of God.
- We need to encourage and to train more people to take up leadership positions.
- We are keen to reach outside the church and serve our community.
- We want to engage with the issues facing people and society both nationally and throughout the world.

Appendices

Appendix 1 - The leadership team

The PCC has 18 members, including three representatives to Deanery Synod, who meet monthly, except for a summer recess. The PCC is representative of the active membership of the Church, with a good cross-section of interests and involvement in Church life and life outside the Church. There are also eight sub-committees.

The PCC members are:



Keith
Howick

Barbara
Saunders

Anne
Howick

Freddie
Adade

Tiffany
Birch

John
Blakely

Richard
Bradley



Jonathan
Debrunner

Ingrid
Glennister

Hazel
Kougoue

Sandi
Lee

Claire
Mottershead

Anthea
Prendergast

Marie
Read



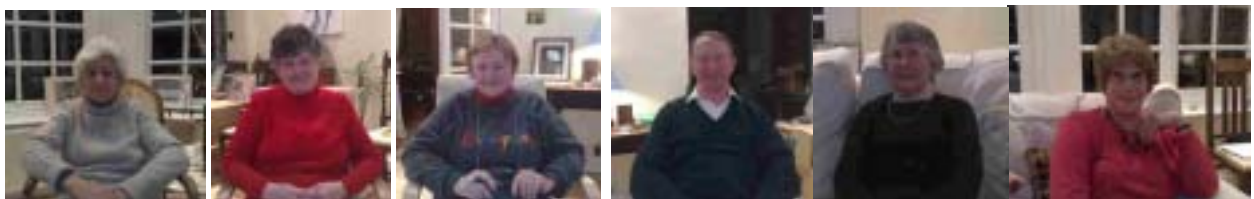
Rev Ted
Baines

Simon
Dalwood

Nick
Mottershead

Sarah
Butler

In addition, there is a Ministry Leadership Team that provides spiritual and pastoral leadership to the church. Its members are:



Margaret
Doubleday
PA emeritus

Juliet
Bull
PA

Anne
Howick
PA

Keith
Howick
Ch Warden

Barbara
Saunders
Ch Warden

Anthea
Prendergast
Ch Warden retired



Rev Ted
Baines
Hon Curate

Simon
Dalwood
Reader

Nick
Mottershead
Reader

Sarah
Butler
Reader

Administrator

We have a paid part-time Administrator working for 3 hours, 4 mornings per week. (A full job description is available.)

Appendix 2 – Church Committees and Groups

The PCC oversees a number of sub-committees, who meet several times a year. Currently we have eight sub-committees:

Committee	Remit
Youth Committee	Attends to all matters relating to children and young people and the organisations who cater for them, recognising the urgent need for the church to understand the world of the child and young persons today, and to make the Christian faith relevant to them.
Finance Committee	Ensures awareness of the most current position on income and expenditure, that financial controls that are in place are effective and understood, has first review of budgets and accounts and discusses key financial matters / special projects as directed by the PCC.
Development Committee	Attends to the consideration, practical planning and provision for the future needs of the parish in terms of buildings and facilities.
Growth and Nurture	Exists to develop outreach in the local community, and nurture and support the church community.
Mission Committee	Attends to all matters outside the parish relating to St Pauls and the worldwide mission of the church including raising awareness of the different situations faced by Christians living elsewhere and supporting missionary work at home and overseas.
Property Committee	Attends to all matters relating to the normal maintenance of the buildings, contents and grounds in which St Pauls Church has an interest. Currently these consist of the church fabric and grounds, the vestry, the church halls, goods and ornaments, the Vicarage and 3 Ashford House.
Social Committee	Exists to foster Christian fellowship within the parish by organising social events (including coordination of existing events such as the Harvest Supper) and including fund raising when required.
Worship Committee	Attends to all matters directly related to the worship of St Pauls and any matters which have a bearing on it.

Other Regular Meetings:

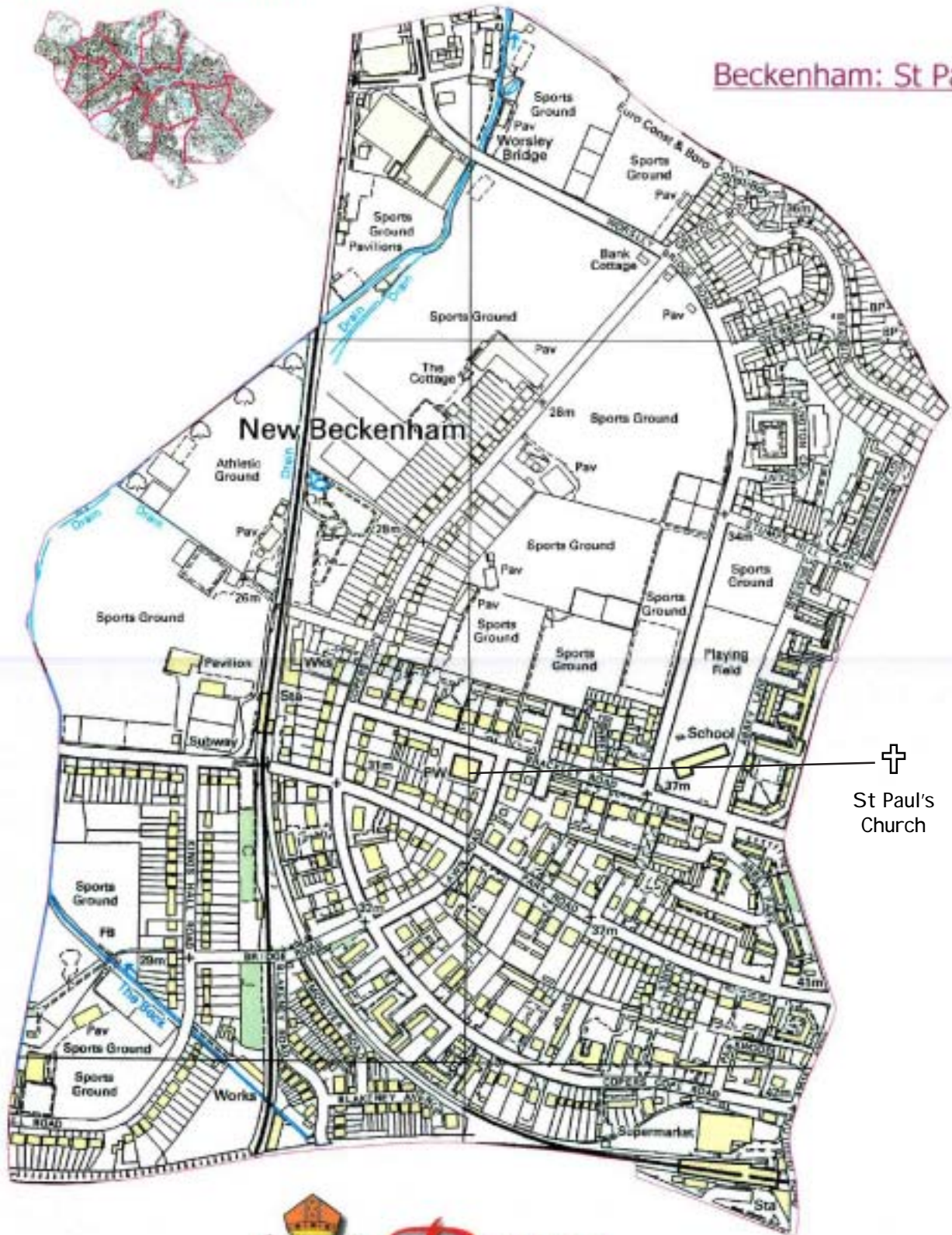
- Wednesday Fellowship (weekly)
- Babies & Toddlers (weekly)
- Gardening Team (monthly)
- Men's Group (quarterly)
- Flower Arrangers (as necessary eg. Festivals)
- Catering (as necessary)

Appendix 3 - The Parish

Deanery of Beckenham



Beckenham: St Paul



✝
St Paul's
Church



Diocese of Rochester Limited 2011. All Rights Reserved.



The Parish now includes some 2,700 dwellings and a population of around 5,000; a number of Victorian and other properties have been demolished and replaced with flats. At the east of the Parish, is an area that has been developed over the past 50 years, with an area of social housing. In the past 5 years private housing has been built beside this and also in the north of the Parish.



Besides residential properties there is a school in the Parish, Worsley Bridge Junior School, which attracts pupils from the local area of the Borough of Bromley and the neighbouring Borough of Lewisham. The links between St Paul's and Worsley Bridge are developing, with the whole school visiting the church twice a term for a start of term and end of term service and celebration.

There are several sports grounds, including the Crystal Palace Football Club practice ground and the Kent County Cricket ground. Also there are sports grounds formerly owned by city banks that are available for use by sports clubs and the local community. These areas, along with Cator Park and the tree lined roads, give the parish a "green" and pleasant environment.

Close to the church is a nursing home with which we have links.

Appendix 4 - Local information

Beckenham in Kent straddles city, suburbia, and country and has a mix of period and modern properties. It is roughly 10 miles from London Bridge and, thanks to a combination of proximity and good communications, enjoys convenient rail and road access to the capital. The nearest large towns are Bromley and Croydon.

With its leafy image, its close proximity to London and the fact that it is served by three railway stations (Beckenham Junction, Clockhouse and New Beckenham), as well as a tram link to Croydon and Wimbledon, Beckenham is an ideal location for many reasons. The area has a busy high street containing many restaurants, a small shopping area with upmarket chains as well as family run independents, and has a good selection of well performing schools. There are four supermarkets within easy reach. Few towns in the county have more public places and open space than Beckenham, with its many parks and sports grounds. It is a town with wide, well kept, tree lined, roads and St Paul's Church is set in such a road.

Medical Information

- Dr. Vella and Partners: The Surgery 14 Manor Road Beckenham Kent BR32LE, 0208 650 0957
- Dr. Yiu and partners: 50 Manor Road Beckenham Kent BR35LG, 020 8650 2444
- Dr. Harrison and partners: Beckenham Beacon 379 Croydon Road Beckenham Kent BR33FD, 020 8650 0173
- Beckenham Beacon hospital: www.Bromley.nhs.uk

Local Schools

- www.bromley.gov.uk/education/schools/primaryschools
- www.bishopchallonerschool.com
- www.stchristophersthehall.org.uk
- www.bromley.gov.uk/education/schools/secondaryschools
- www.sydenhamhighschool.gdst.net
- www.bromleyhigh.gdst.net
- www.stdunstans.org.uk
- www.dulwich.org.uk
- www.alleyns.org.uk
- www.jags.org.uk

General.

- www.bromley.gov.uk
- www.beckenham.net

Appendix 5 - Statistics

Parish statistics (*)

Population	Nos	%
0-4	254	5%
5-18	491	10%
19-59	3,288	66%
60+	936	19%
Total	4,949	100%

Religious beliefs	Nos	%
Christian	3,147	64%
Other religions	236	5%
Atheist	998	20%
Not stated	568	11%

* As per 2006 Diocesan statistics

St Paul's attendance on Sunday

The Electoral Roll in April 2009 was 189. The average Sunday attendance is about 125 spread over the three services:

- 8.00am, there are between 5 - 10 people
- 10.30am, there are between 100 - 120 adults, plus 20 - 30 children and young people
- 6.30pm, there are between 16 - 24 people

Baptism, Funerals, Weddings

Over the last 12 months, we have had:

- 11 baptisms and 1 thanksgiving service
- 9 funerals in church, 9 weddings and 1 Blessing of marriage
- A Marriage Preparation course

Appendix 6 – Contact details & Map

Address:

St Paul's Church
Brackley Road
Beckenham
Kent
BR3 1RB

The Parish Office is open:

9:30 am to 12:30 pm Monday to Wednesday,
10:00 am to 1:00 pm Thursday.

Tel: 0208 650 0501

Email:

administrator@stpaulbeckenham.org.uk

Web sites:

www.stpaulbeckenham.org.uk

Where to find us:

